

Goshen South Wind Energy Facility Meeting Our Region's Energy Needs

Idaho's Energy Use is Growing

Idaho is a net importer of electricity. In 2006, Idaho used 22.8 million megawatt-hours of electricity, but only produced 13.4 million within the state's borders. The rest came from outside the state, mostly from coal-fired generators (see http://www.eia.doe.gov/cneaf/electricity/st_profiles/idaho.html).

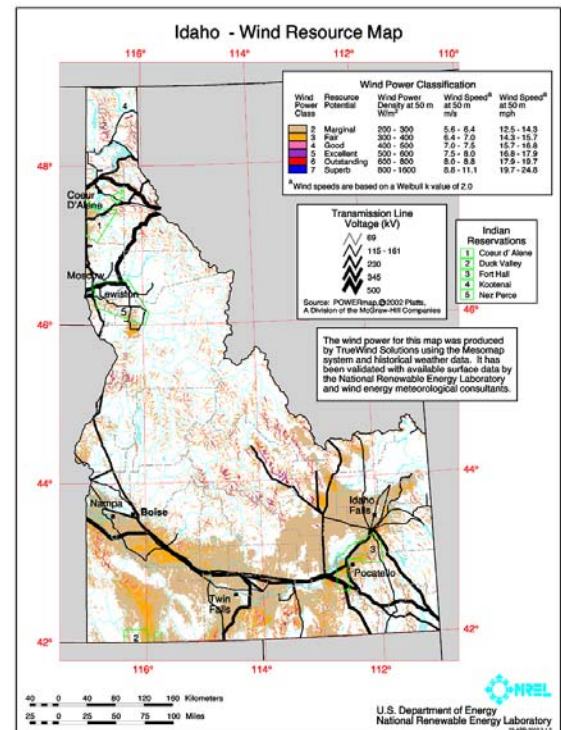
Idaho is growing rapidly. The U.S. Census Bureau estimates that Idaho's population will grow from about 1.4 million people today to nearly 2 million people by 2030. As a result, Idaho Power anticipates its customer base will grow rapidly – from about 455,000 customers today to about 680,000 by the end of 2025. Avista, which provides electricity to western Idaho, expects its customer base to grow 50 percent by 2027.

Meeting Our Future Energy Needs

Much of Idaho's existing electricity supply comes from hydropower, but there are only limited opportunities to add new hydroelectric capacity in the region. So we must look to other generation alternatives.

Idaho is ranked 13th in the nation in wind energy potential. Scientists at the INL estimate Idaho has 15,000 megawatts of wind energy generating potential.

Discussions are underway with Idaho's electric utility companies regarding power purchase agreements. In addition, the western United States also is in need of new electrical generation. This facility can provide power and benefits to the western United States if constructed.



Contact Us

Rich Rayhill, Vice President – r-rayhill@rl-en.com
 Randy Gardner, Project Manager – rgardner@rl-en.com
 Web site: www.ridgelineenergy.com

